



BUNGARLEY AUSTRALIAN WHITES

BUNGARLEY AUSTRALIAN WHITES



ON PROPERTY RAM SALE
OCTOBER 2ND 2024

TARCUTTA NSW

10.30AM INSPECTIONS, SALE STARTS AT 1.00PM



BUNGARLEY AUSTRALIAN WHITES

DAN LUSTENBERGER

0428 287 944

Elders

HENRY BOOTH

0428 375 816



AuctionsPlus

INTERFACED WITH AUCTIONSPLUS



BRUCELLOSIS ACCREDITED
JOHNES VACCINATED
AWSBA BLUE TAGGED QUALITY
FLOCK 18

Gday and welcome to Bungarleys 2024 on property sale.

An even and strong line up this year. Our focus is to breed no-nonsense sheep, without having anything but excellence in genetics and breed type.

We need to remember as a stud it is our duty to produce animals that will be high value assets to our clients for as long as possible. We do this at Bungarley with our hard work and dedication, and it is absolutely humbling to see you put your trust in us.

WWW.BUNGARLEY.COM.AU



BUNGARLEY AUSTRALIAN WHITES



PLATINUM TAT210184

Purchased by Bungarley with the Elite Syndicate 2022 sale. Record \$240,000. A highly sort after ram in the breed, a ram with everything right and is breeding this on very strongly through his progeny. This is the first year that Bungarley will offer his progeny.



Trait	Explanation	Date (for Bungarley)	
DOB	Date of Birth	1/08/2024	
WWT	Weaning Weight	19/10/2023	2.5 months
BT	Birth Type		1 (Single), 2 (Twin), 3 (Triplet), 4 (Quad)
EPWT	Early Post Weaning Weight	19/01/2024	5 months Age
ADG W _ EP	Average Daily Gain (Weaning to Early Post Weaning Measurement)	Average for Group - 154 g/head/day	
YWT	Yearling Weight	05/07/2024	11 months
ADG EP - Y	Average Daily Gain (Early Post Weaning to yearling measurement)	Average for Group - 113 g/head/day	

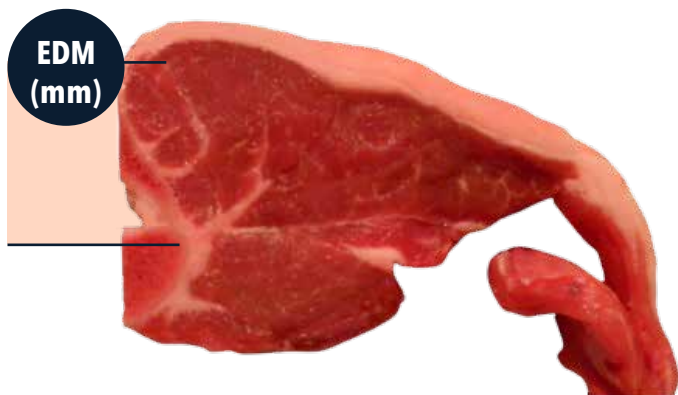


BUNGARLEY AUSTRALIAN WHITES

Yearling Eye Muscle Depth (YEMD)

Date: 05/07/2024

(for Bungarley)



The depth of the eye muscle or backstrap is measured between the 12th and 13th long ribs (C Site). The measurement is on live animals using an ultrasound. Accredited scanners undertake the work. Rams with more EDM have more muscle, independent of weight.



BUNGARLEY AUSTRALIAN WHITES

Yearling Carcase Fat (YCF)

Date: 05/07/2024

(for Bungarley)



Carcase C site fat (CFAT) measure the difference between animals in fat depth at the C site, as measured on the carcass.



BUNGARLEY AUSTRALIAN WHITES

Yearling Eye Muscle Shape Score (Y Eye Muscle Score)

This score is measured by the muscle scanner who assesses the shape of each eye muscle at the C Site.

The ideal eye muscle is long and rounded in shape, rather than triangular, flat or short in shape. meaning that there is more delicious chop to eat. The Eye Muscle Shape score gives a ranking to each of the different eye muscle shapes, with 1 the top score and 5 the poorest score.

All of the Bungarley sale rams are a 3 score or higher, giving buyers confidence that the rams they purchase have a deep round eye muscle. Progeny from these rams will producer larger eye muscle lambs.





BUNGARLEY AUSTRALIAN WHITES



1.

BEST



2.

**ABOVE
AVERAGE**



3.

GOOD



4.

BELOW



5.

POOR

STUD RAMS

LOT NO.	TAG NO	DOB	BIRTH TYPE	SIRE	DAM	WWT	YWT	YEMD	YCF	EMS
1	230226	AUG	SINGLE	TAT210184	BUN210123	46.2	78	35	4	3
.....										
2	230030	AUG	QUAD	TAT210184	BUN210098	44.4	72.4	27	4.5	2
.....										
3	230181	AUG	SINGLE	TAT210184	BUN210128	42.6	81.4	33	3.5	3
.....										
4	230286	AUG	TWIN	TAT210184	BUN180012	36.6	75.2	37	7	3

FLOCK

LOT NO.	TAG NO	DOB	BIRTH TYPE	SIRE	DAM	WWT	YWT	YEWD	YCF	EMS
5	230177	AUG	TWIN	TAT210184	BUN180012	33.4	75.2	37	3	3
6	230028	AUG	QUAD	TAT210184	BUN210034	42.6	66.8	37	3	3
7	230062	AUG	SINGLE	TAT210184	BUN220047	33.6	66.4	29	4	3
8	230156	AUG	SINGLE	TAT210184	BUN180036	44.2	78.8	38	5	3
9	230140	AUG	TWIN	TAT210184	BUN190180	36.2	79.2	36	5.5	3
10	230005	AUG	ET	TAT210184	BUN210002	49.4	91	33	4	3
11	230034	AUG	TRI	TAT210184	BUN210061	44.2	85.4	35	4	3
12	230059	AUG	ET	TAT210184	BUN210015	40.2	78.6	37	4	3
13	230075	AUG	TWIN	TAT210184	BUN210080	41	70.2	27	3	3
14	230231	AUG	SINGLE	TAT210184	BUN210030	38.4	71.4	29	2	2

LOT NO.	TAG NO	DOB	BIRTH TYPE	SIRE	DAM	WWT	YWT	YEWD	YCF	EMS
15	230154	AUG	SINGLE	TAT210184	BUN190164	35	69.6	33	4	3
16	230284	AUG	TWIN	TAT210184	BUN210115	39	80.4	34	7	3
17	230023	AUG	TWIN	TAT210184	BUN190191	26.8	73	29	5.5	3
18	230250	AUG	TWIN	TAT210184	BUN210151	32.2	72.2	36	4.5	3
19	230020	AUG	ET	TAT210184	BUN210047	42.4	75.6	34	4	3
20	230220	AUG	TWIN	TAT210184	BUN190185	29	75.2	33	8	3
21	230132	AUG	SINGLE	BUN210107	BUN180030	32	70.2	35	3	3
22	230113	AUG	TWIN	BUN210107	BUN210145	24.4	66	30	3	3
23	230037	AUG	ET	TAT210184	BUN210073	41.8	65.8	33	2	3
24	230004	AUG	ET	TAT210184	BUN210149	41.4	70.8	32	2	3
25	230009	AUG	QUAD	TAT210184	BUN210098	42.6	72.4	30	2.5	2

LOT NO.	TAG NO	DOB	BIRTH TYPE	SIRE	DAM	WWT	YWT	YEMD	YCF	EMS
26	230035	AUG	ET	TAT210184	BUN210073	42.2	60.2	28	2.5	2
27	230237	AUG	SINGLE	TAT210184	BUN220071	41	72.6	31	4	2
28	230088	AUG	TWIN	TAT210184	BUN210120	38.2	65	30	4	3
29	230058	AUG	TWIN	TAT210184	BUN190176	25	56.6	30	3	3
30	230190	AUG	TWIN	TAT210184	BUN220056	29	60.8	34	3	3
31	230072	AUG	TWIN	BUN210107	BUN210145	31.8	66.4	34	2.5	3
32	230234	AUG	SINGLE	BUN210107	BUN180011	29.6	64	30	4	3
33	230173	AUG	TWIN	TAT210184	BUN210078	29.2	75.2	32	5	3
34	230252	AUG	TWIN	TAT210184	BUN210087	25.6	68.8	31	5.5	3
35	230093	AUG	TWIN	TAT210184	BUN180003	36	65.4	36	3.5	3
36	230242	AUG	TWIN	TAT210184	BUN220078	33.4	63	28	2	3

LOT NO.	TAG NO	DOB	BIRTH TYPE	SIRE	DAM	WWT	YWT	YEMD	YCF	EMS
37	230279	AUG	SINGLE	TAT210184	BUN210059	43.8	74	32	3.5	3
38	230068	AUG	TWIN	TAT210184	BUN210035	39.8	65	30	3	2
39	230001	AUG	ET	TAT210184	BUN210067	40.2	67.4	33	2	3
40	230163	AUG	TWIN	TAT210184	BUN220113	35.4	56.8	25	2	2
41	230295	AUG	SINGLE	TAT210184	BUN180027	30.4	72.2	31	3	2
42	230217	AUG	TWIN	TAT210184	BUN210136	36.8	71	32	6	2
43	230048	AUG	ET	TAT210184	BUN210073	37.5	62.2	34	3	3
44	230253	OCT	SINGLE	TAT210184						
45	230245	OCT	TWIN	TAT210184						
46	230251	OCT	TWIN	TAT210184						
47	230355	OCT	SINGLE	TAT210184						

LOT NO.	TAG NO	DOB	BIRTH TYPE	SIRE	DAM	WWT	YWT	YEMD	YCF	EMS
---------	--------	-----	------------	------	-----	-----	-----	------	-----	-----

48 230366 OCT SINGLE TAT210184

49 230323 OCT SINGLE TAT210184

50 230163 OCT TWIN TAT210184

51 230169 OCT SINGLE TAT210184

52 230319 OCT TWIN TAT210184

53 230125 OCT SINGLE TAT210184

54 230271 OCT SINGLE TAT210184

55 230122 OCT SINGLE TAT210184

56 230091 OCT TWIN TAT210184



BUNGARLEY AUSTRALIAN WHITES



WWW.BUNGARLEY.COM.AU